



FOURTH QUARTER AND FULL YEAR 2022 BUSINESS UPDATE

---



FEBRUARY 15, 2023

## Cautionary statement regarding forward-looking statements

This presentation contains certain forward-looking statements within the meaning of the federal securities laws. All statements contained in this presentation that do not relate to matters of historical fact should be considered forward-looking statements, including but not limited, to those statements around our ability to achieve certain milestones around and commercialize the Aurora Driver on the timeframe we expect or at all. These statements are based on management's current assumptions and are neither promises nor guarantees, but involve known and unknown risks, uncertainties and other important factors that may cause our actual results, performance or achievements to be materially different from any future results, performance or achievements expressed or implied by the forward-looking statements. For factors that could cause actual results to differ materially from the forward-looking statements in this presentation, please see the risks and uncertainties identified under the heading "Risk Factors" section of Aurora Innovation, Inc.'s ("Aurora") Quarterly Report on Form 10-Q for the quarter ended September 30, 2022, filed with the SEC on November 3, 2022, and other documents filed by Aurora from time to time with the SEC, which are accessible on the SEC website at [www.sec.gov](http://www.sec.gov). All forward-looking statements reflect our beliefs and assumptions only as of the date of this presentation. Aurora undertakes no obligation to update forward-looking statements to reflect future events or circumstances.

All third-party logos appearing in this presentation are trademarks or registered trademarks of their respective holders. Any such appearance does not necessarily imply any affiliation with or endorsement of Aurora.

# AURORA HORIZON ROADMAP TO LAUNCH



\*Aurora Driver Feature Complete is defined as having implemented all of the capabilities necessary for launch and all policy interventions removed.

\*\*Aurora Driver Ready is defined as validation complete and Aurora Driver Safety Case closed.

\*\*\*Hardened driverless hardware is engineered for extreme environments and enhanced reliability.

# 2022 Key Highlights

A top-down visualization of a truck driving on a road. The truck is a dark grey color, and the road ahead is highlighted in a bright green color. There are several blue rectangular boxes floating above the road, representing data points or sensor inputs. The background is dark, suggesting a night or low-light environment.

## Aurora Driver

Released Beta versions  
2.0, 3.0, 4.0, and 5.0

A close-up photograph of a person wearing a dark blue jacket and black gloves, leaning over the side of a white semi-trailer. They appear to be working on a component of the trailer, possibly a door or a latch. The background is slightly blurred, showing an outdoor setting.

## Operations

Expanded and added pilot customers  
and industry collaborations

A photograph of a fleet of blue semi-trucks parked in a row. The trucks are modern, with large chrome grilles and multiple mirrors. The sky in the background is a mix of blue and orange, suggesting a sunset or sunrise.

## Truck Platform

Scaled our fleet to 31 trucks and made  
progress with our OEM partners,  
Paccar and Volvo, toward scalable,  
autonomy-enabled truck platforms

# Our Beta 5.0 release continues to advance the Aurora Driver toward commercial readiness



Responding to active emergency vehicles



Fault Management System:  
completing the end-to-end flow by  
re-entering traffic from the shoulder

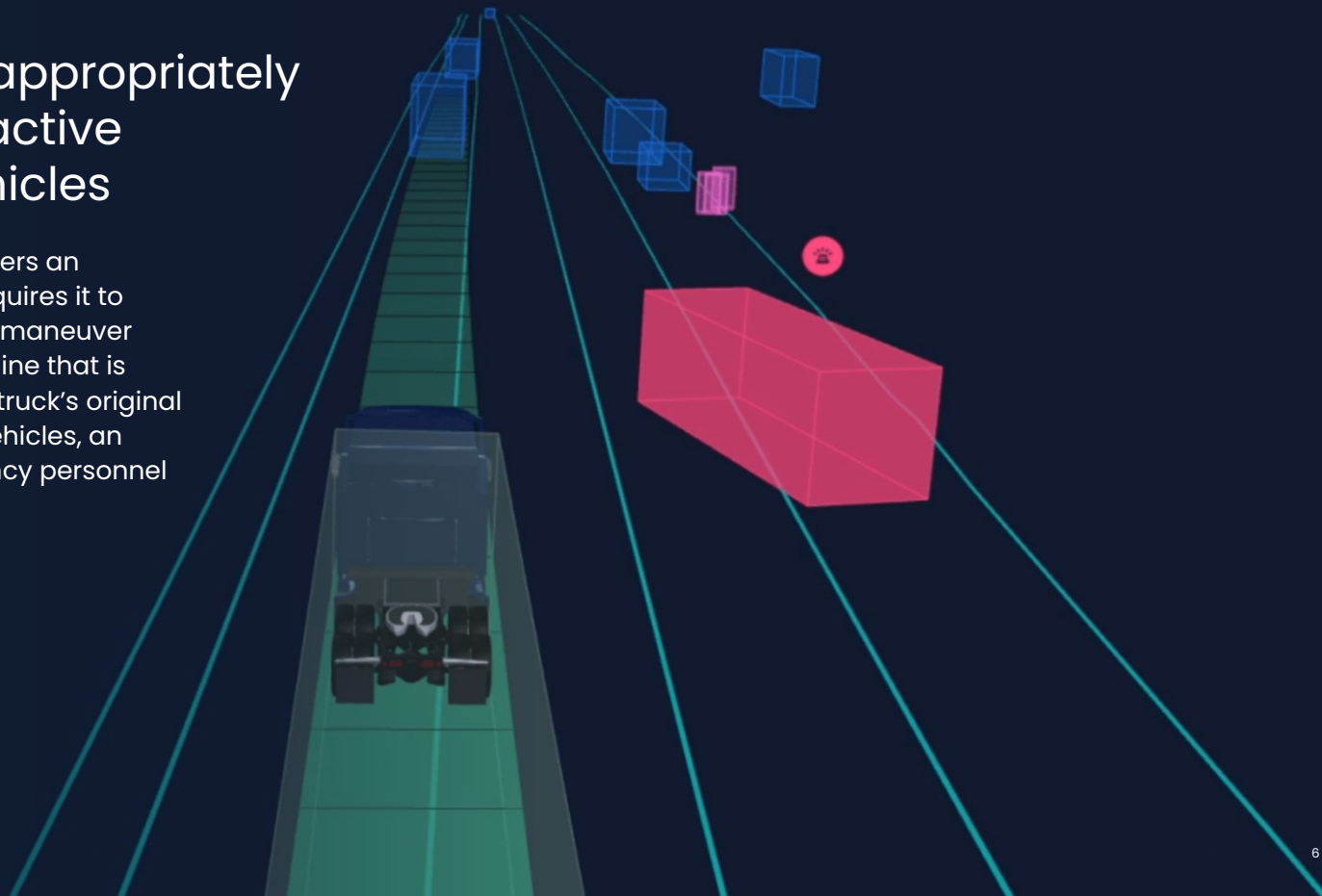


Navigating lanes made  
by temporary barriers

# Detecting and appropriately responding to active emergency vehicles

The Aurora Driver encounters an emergency scene that requires it to execute a lane change to maneuver around a stopped fire engine that is partially encroaching the truck's original lane, followed by police vehicles, an ambulance, and emergency personnel on the shoulder ahead

[Watch video ▶](#)



Forward Port

Forward Center

Forward Starboard

Lateral Starboard

HD

HD

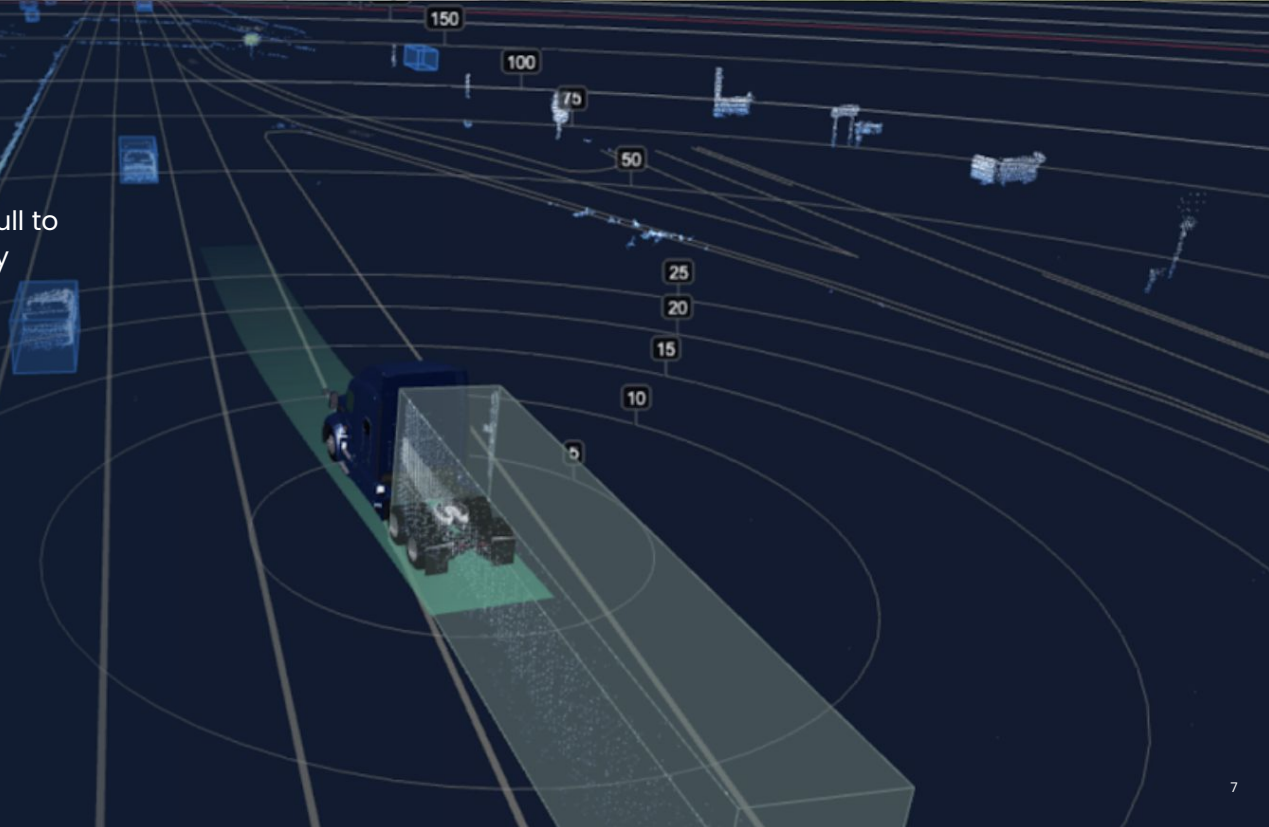
HD

HD

# Fault Management System: Completing the end-to-end flow

After executing on a command to pull to the shoulder, the Aurora Driver safely re-enters traffic from the shoulder

Watch video ▶



## Navigating lanes made by temporary barriers

The Aurora Driver encounters a complex construction scene and navigates a lane made with cones and jersey barriers, knowing that it is safe to drive partially on the shoulder

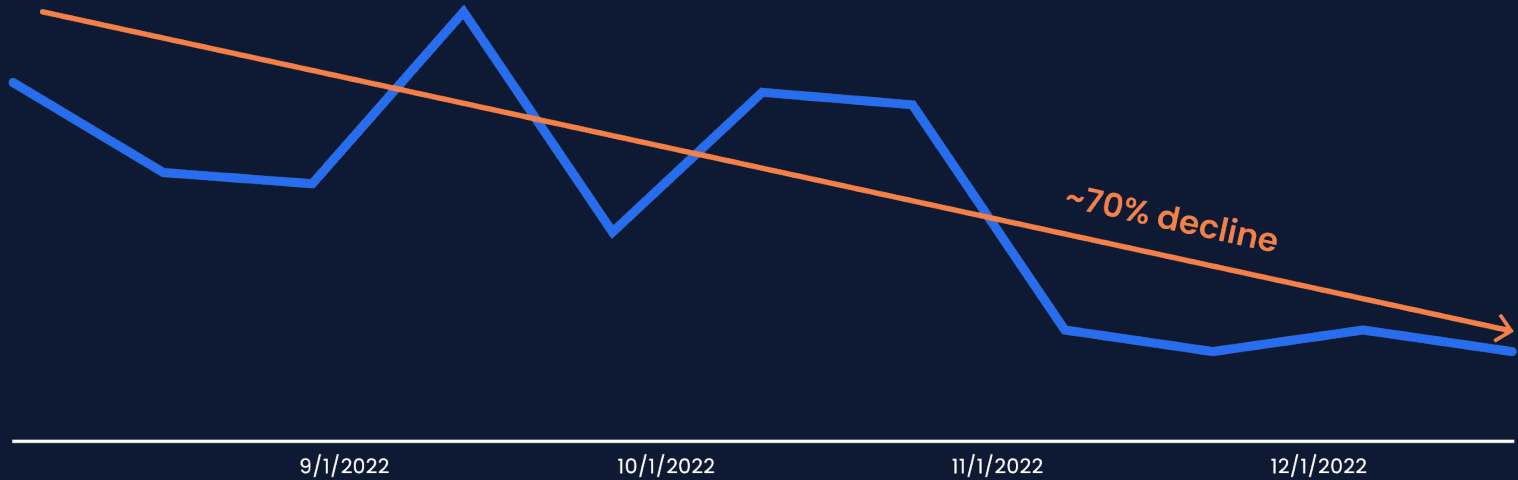
Watch video ▶





# We continue to improve the performance of the Aurora Driver

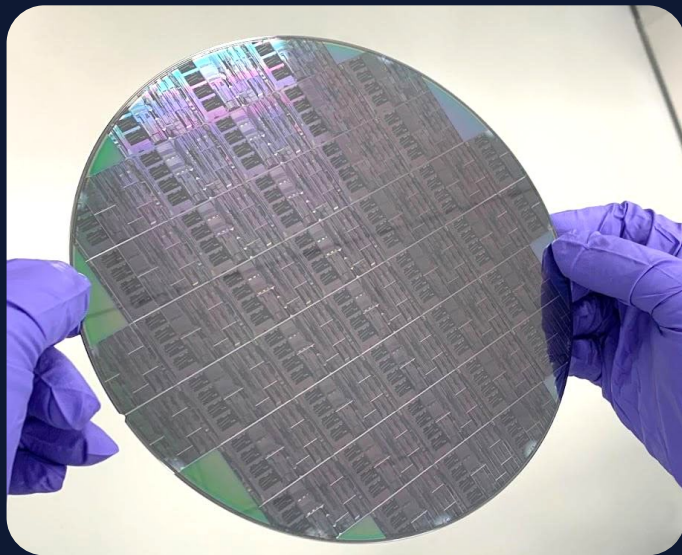
## REQUIRED INTERVENTIONS DUE TO ROAD DEBRIS



We expect to achieve our critical Feature Complete milestone for our Dallas to Houston launch lane by the end of the first quarter of 2023



We are also maturing the Aurora Driver's hardware to support our commercial launch and longer-term, the evolution toward a scalable hardware kit



Silicon photonics: FirstLight Lidar on a chip

We achieved both our Q4 commercial load target of 30 loads/week and our Q1 target of 40 loads/week

Cumulative to-date through 02/12/23,  
we've delivered

**1,150**

Loads

Across

**324k**

Miles

**98%**

On-Time

Aurora

