



Aurora

SECOND QUARTER 2022 BUSINESS UPDATE



AUGUST 3, 2022

Cautionary statement regarding forward-looking statements

This presentation contains certain forward-looking statements within the meaning of the federal securities laws. All statements contained in this presentation that do not relate to matters of historical fact should be considered forward-looking statements, including but not limited, to those statements around our ability to achieve certain milestones around and commercialize the Aurora Driver on the timeframe we expect or at all. These statements are based on management's current assumptions and are neither promises nor guarantees, but involve known and unknown risks, uncertainties and other important factors that may cause our actual results, performance or achievements to be materially different from any future results, performance or achievements expressed or implied by the forward-looking statements. For factors that could cause actual results to differ materially from the forward-looking statements in this press release, please see the risks and uncertainties identified under the heading "Risk Factors" section of Aurora Innovation, Inc.'s ("Aurora") Quarterly Report on Form 10-Q for the quarter ended March 31, 2022, filed with the SEC on May 12, 2022, and other documents filed by Aurora from time to time with the SEC, which are accessible on the SEC website at www.sec.gov. All forward-looking statements reflect our beliefs and assumptions only as of the date of this presentation. Aurora undertakes no obligation to update forward-looking statements to reflect future events or circumstances.

All third-party logos appearing in this presentation are trademarks or registered trademarks of their respective holders. Any such appearance does not necessarily imply any affiliation with or endorsement of Aurora.

AURORA HORIZON ROADMAP TO LAUNCH



*Aurora Driver Feature Complete is defined as having implemented all of the capabilities necessary for launch and all policy interventions removed.

**Aurora Driver Ready is defined as validation complete and Aurora Driver Safety Case closed.

***Hardened driverless hardware is engineered for extreme environments and enhanced reliability.

We achieved our fault management milestone ahead of schedule

At the end of the Q2, we demonstrated our Fault Management System on Aurora Driver-powered trucks operating at highway speeds.

[Watch video ▶](#)



Our Beta 3.0 release continues to advance the Aurora Driver toward commercial readiness



Navigating surface streets



Downhill engine braking



Aborting lane changes



Improved localization with Aurora Atlas

ACTUAL PLANNER → ACTUAL PLANNER

13.5 MPH

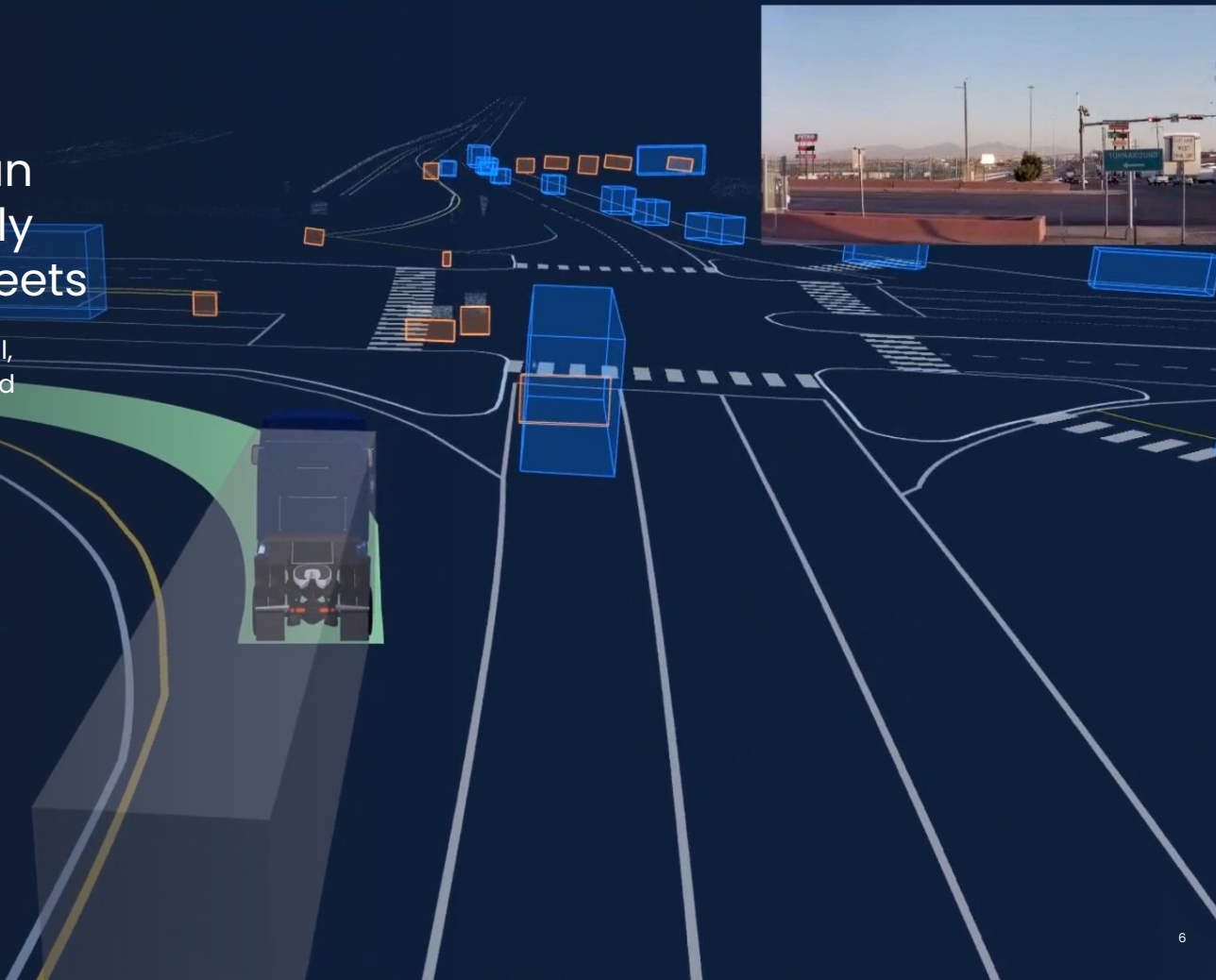
SPEED LIMIT 55

ACTIVE

The Aurora Driver can navigate increasingly complex surface streets

The Aurora Driver exits our terminal, travels down the frontage road and executes a Texas U-turn before merging onto the highway.

Watch video ▶



The Aurora Driver can safely handle long downhill grades using engine braking

Through this capability, the Aurora Driver avoids excessive wear and danger that comes from overheating brake pads.

Watch video ▶

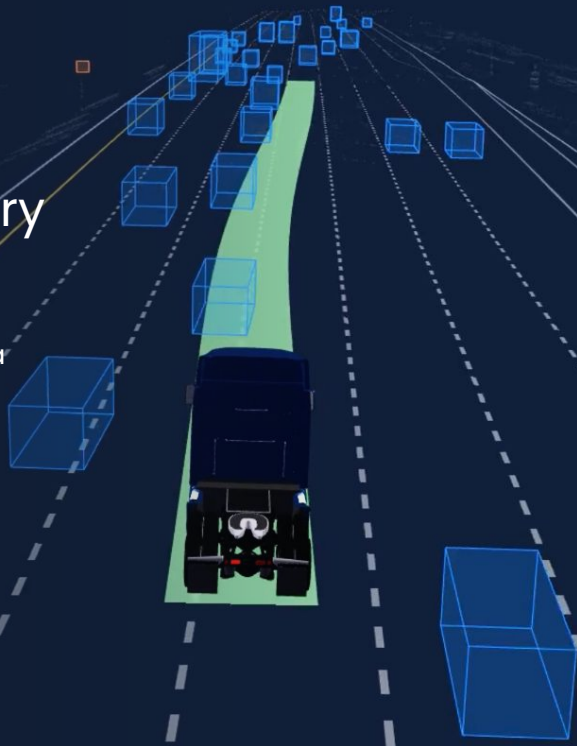




The Aurora Driver safely aborts planned lane changes when necessary

The Aurora Driver has plans to change lanes but another vehicle has aggressively cut into the lane. The Aurora Driver recognizes that a vehicle is now occupying the space and safely returns to its lane, ultimately executing the lane change once it can safely do so.

[Watch video ▶](#)

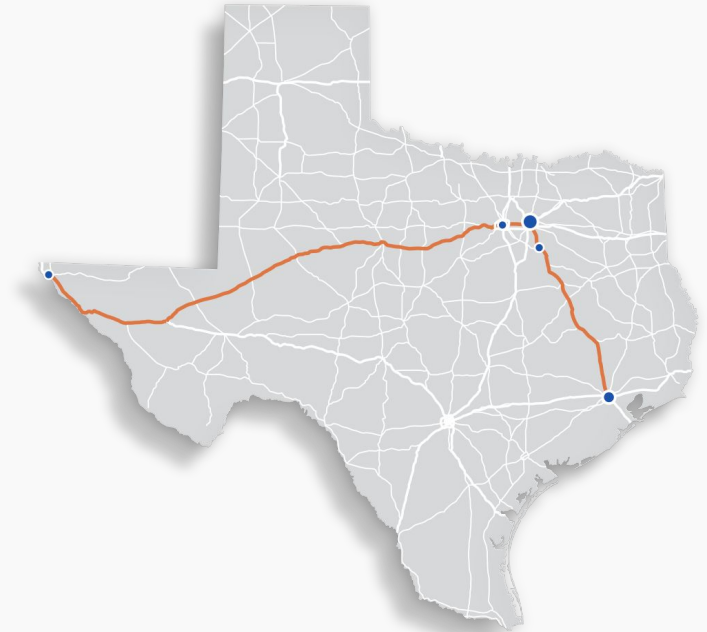


Aurora Horizon: Strengthening the foundation for commercial operations

During the second quarter, we doubled our commercial miles driven across our pilots and lanes, and also saw improved autonomy performance, compared to the first quarter, further progressing the Aurora Driver toward commercial readiness.



Uber
Freight



FedEx shares how we
are autonomously
delivering shipments
together in Texas

Watch video ▶



The logo for Aurora, featuring a stylized 'A' with a blue-to-white gradient and the word 'Aurora' in a bold, blue, sans-serif font.

Aurora